

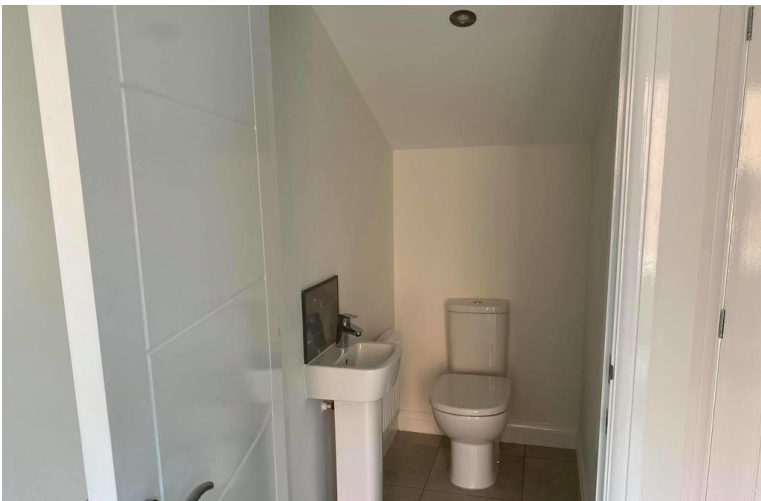
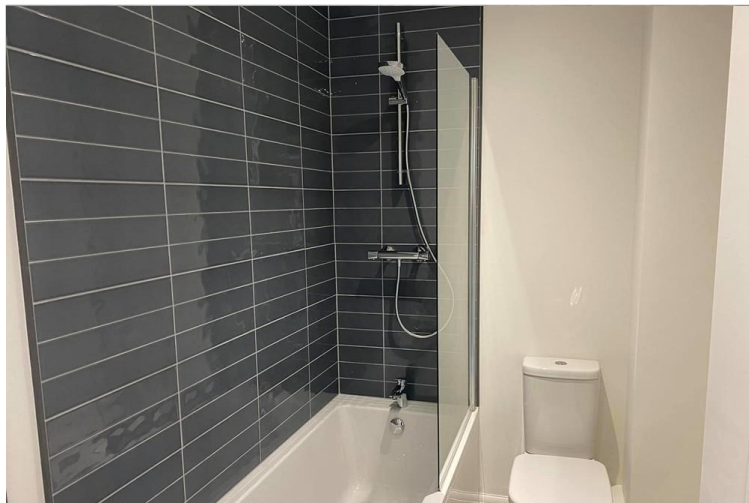
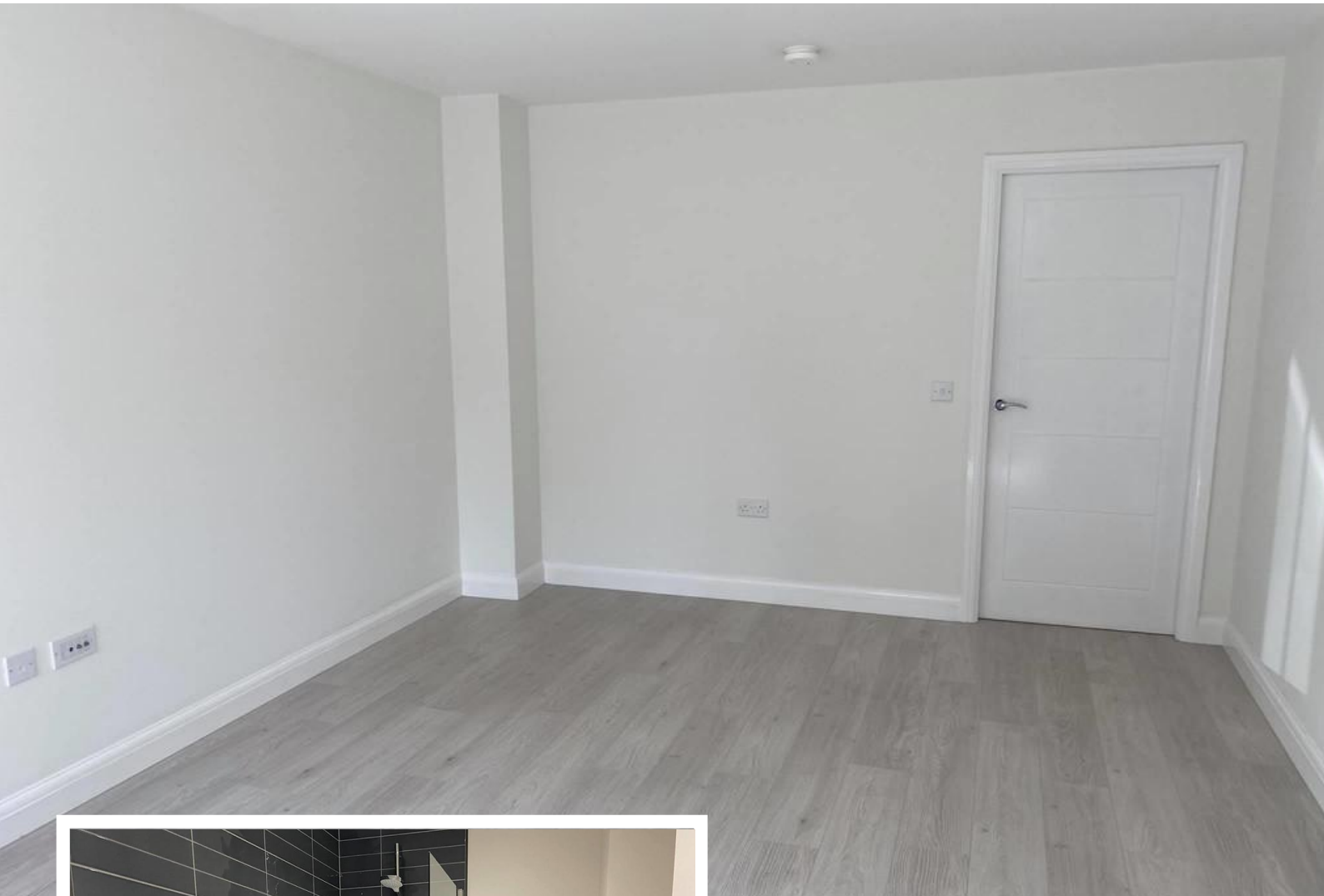


**8 Clover Dale**  
Goole, , DN14 6DW

- New Build
- Semi-detached
- Garden
- Close to Town Centre

**£795 pcm**





## Property Description

We are delighted to have a new three bedroom semi-detached property to offer, located at The Greenways on the new Beal Homes development in Goole.

The house will comprise of a modern kitchen with french doors to the garden, spacious living room, downstairs WC, two double bedrooms and one single, contemporary bathroom.

### KITCHEN

Stylish kitchen with grey and white units, fitted oven with a gas hob

### LOUNGE

Spacious lounge to the front of the property, painted white with grey laminate

### BATHROOM

Contemporary bathroom with white suite, grey tiles, shower over the bath

### MASTER BEDROOM





Spacious double room with white walls and grey carpet

#### BEDROOM

Small double room with white walls and grey carpet

#### BEDROOM

Single room with white walls and grey carpet

#### GARDEN

A private lawned area



